

Objective: To clarify the benefits of Goldseal to prospective applicators and the downstream benefits to specifiers and clients, of a manufacturer/applicator backed Warranty.

Background: There are thousands of maintenance coatings from hundreds of suppliers world wide.

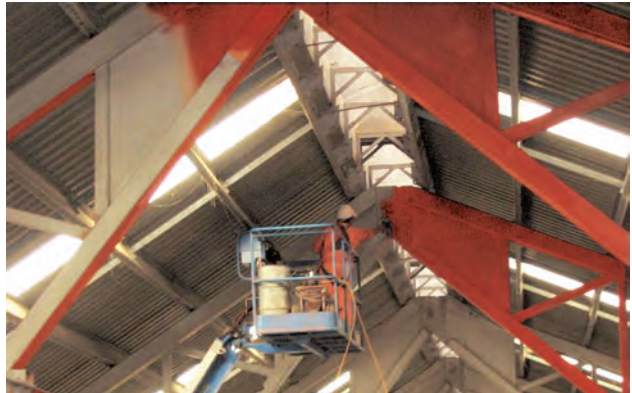
However most Industrial coating companies tend to develop relationships with a few key suppliers and apply a range of coatings they know and are comfortable with. That's common sense.

In any situation there can be a set of circumstances where a customer requires a slightly different solution. In this case there are hundreds of specialty products that deal with less common situations.

Goldseal technology was developed in New Zealand to deal with a number of difficult coating situations encountered in local industry. New Zealand is really an Island nation with a large coastline and marine influence. There are no large inland states or cities, so there is an unusual complexity in the corrosion environment. Most industrial areas are near ports with the main inland processing facilities servicing the forestry and meat processing sectors. Some inland areas have a strong geothermal influence.

As New Zealand is deep in the Southern hemisphere with cultural and technical ties leading back to the United Kingdom we have always been at the far reaches of technical support and development.

The Goldseal technology has therefore been a co-operative venture in association with local industry and has never been promoted worldwide by a major paint company. As apposed to laboratory development being pushed into the field Goldseal has steadily evolved through field evolution to be a highly effective heavyweight corrosion solution, that deals with all the major nasty situations dry film paints struggle with.



OUR MOTO IS IF IT IS STRAIGHT FORWARD TO ACCESS, PREPARE, BLAST OR PAINT THEN USE A TRADITIONAL COATING SOLUTION.

IF ACCESS AND PREPARATION ARE DIFFICULT, WITH SHORT SHUT DOWNS, CONDENSATION IN CONFINED SPACES, INTERCOAT ADHESION ISSUES, OR EXPANSION / CONTRACTION AND VIBRATION...GOLDSEAL IT.

Goldseal is applied by trained applicators who know when to use standard maintenance paints and when to use Goldseal. The product is applied through standard airless spray equipment, without grit blasting, to oxidising steel structure and steel/wood/concrete combinations.

The modern world is becoming more demanding on Health and Safety and environmental responsibility. As many modern coatings get more high Tech, so does the operational environment and surface preparation.

Specifiers and district councils, Industry and Government Bodies are looking for responsible industry professionals to promote cost effective maintenance coating options, that reduce the multi Billion dollar loss of infrastructure through corrosion. In emerging countries there is a distinct need to deal with overdue maintenance on fixed assets that have been neglected.

Through well trained and Licensed applicators having a manufactures warranty Goldseal delivers cost effective and technically excellent performance. This is supported by over 20 years documented performance in the field.

INFORMATION BULLETIN

8

INTERNATIONAL LICENSEE SEARCH

The Goldseal Group wishes to discuss licensing options with interested parties

WHAT ARE THE CHARACTERISTICS OF THE GOLDSEAL TECHNOLOGY AND BUSINESS

CHARACTERISTIC

Goldseal is a compound

High Solids (97%)

No Grit Blast

Single coat

Encapsulation

Cost effective

Non Dangerous Goods

No shelf life

Spill recyclable

VOC 2.9%

Severe environments formula

Approved applicators

Manufacturer support

Faster contract completion

Lifecycle costing

Repeat cycle costing

BENEFIT

Different functionality to paint coatings

No solvents or catalysts

Less complexity and down time

Faster application time 350-2000 microns

Existing paint , galv and red lead coatings

Due to less prep and single coat

No transport or storage issues

No stock rotation or wastage

Environmentally responsible

No release toxicity

Long service life where coatings fail in 5-7 years

Professional quality control- no failures

Back to back warranty , contract specific

Protects quality , profit and clients productivity

See Bulletin 3

Low pressure wash and recoat without stripping

Goldseal has evolved an enviable market reputation and loyal client following as a competent , straight forward , cost effective maintenance coating, within environments that are difficult to clean and multi coat. Areas where facilities are within 1 km of the coast handling fertilizer , other chemicals or where buildings house production processes using chemicals or producing condensation Goldseal is the most cost effective option for technical performance , contract quality , service life and minimal shutdown time .

Any experienced contractor will easily recognise environments which threaten surface preparation , contract quality/profit and service life.

THIS IS WHERE GOLDSEAL HAS
DELIVERED 40 YEARS OF COST
EFFECTIVE CORROSION CONTROL

GOLDSEAL GROUP

Rustproof Services (NO) 2005 Ltd

P.O. Box 186, Whitianga, 3542. N. Z.

Telephone: 07 866 2304

Freephone: 0800 78 78 77

Mobile: 0276 315 657

E-mail: rustproofservices@goldseal.co.nz

www.goldsealrustproofing.com